

# Resettlement: a vital protection tool



Sarah Knight, Resettlement Assistant  
**International Organization for Migration (IOM)**  
17 Route des Morillons, CH-1211, Geneva 19, Switzerland  
Tel: +41 22 717 9111 • Fax: +41 22 798 6150  
E-mail: [sknight@iom.int](mailto:sknight@iom.int) • Website: [www.iom.int](http://www.iom.int)

Educational  
Seminar,  
Bratislava 2017

# Roots in resettlement



# Resettlement is a key IOM activity

Arranging safe and orderly movements of refugees and other vulnerable migrants is at the core of IOM's Constitutional mandate. **Art. 1.a/b states**  
**"The purposes and functions of the Organization shall be:**

(a) to make arrangements for the organized transfer of migrants, for whom existing facilities are inadequate or who would not otherwise be able to move without special assistance, to countries offering opportunities for orderly migration; and (b) to concern itself with the organized transfer of refugees, displaced persons and other individuals in need of international migration services for whom arrangements may be made between the Organization and States concerned, including those States undertaking to receive them."



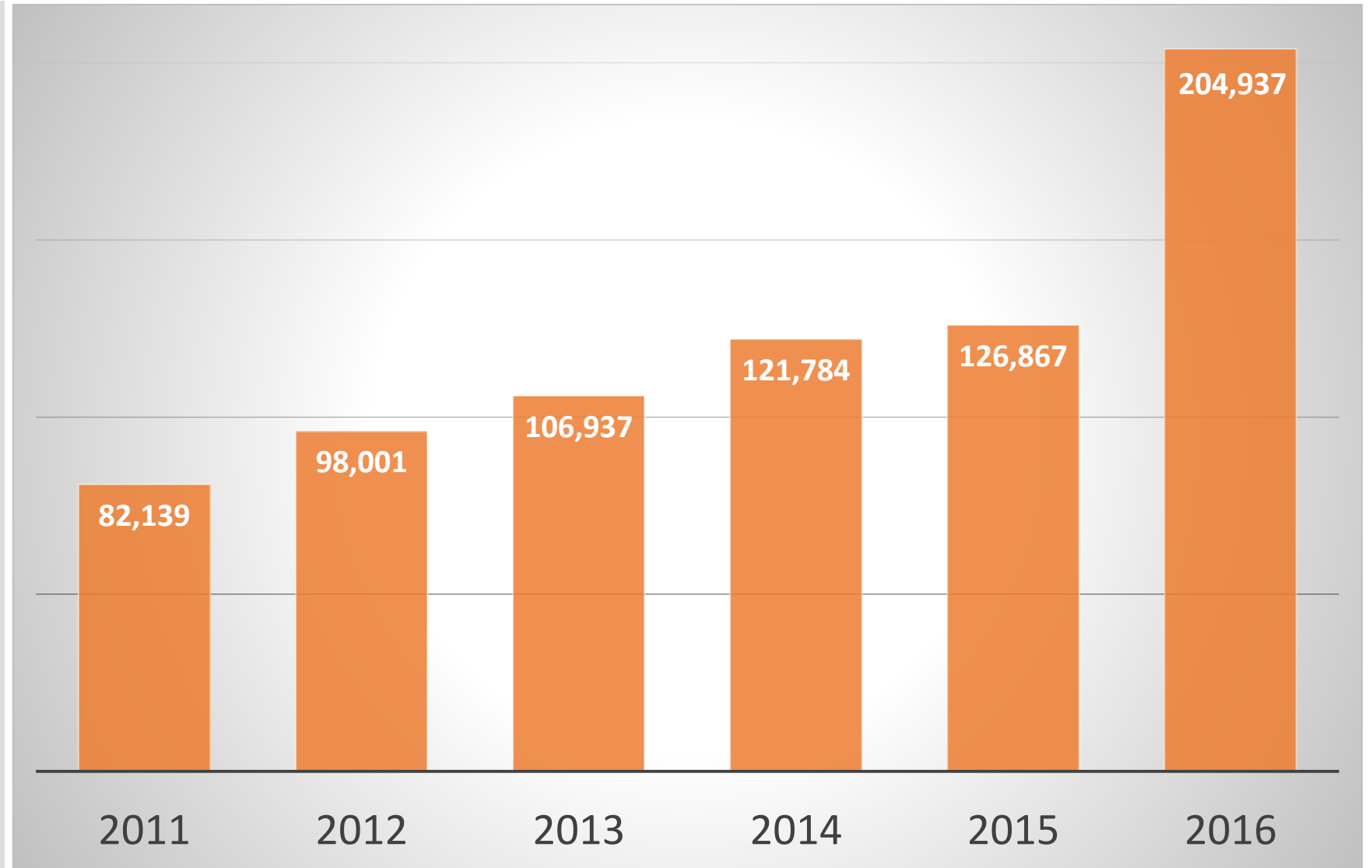




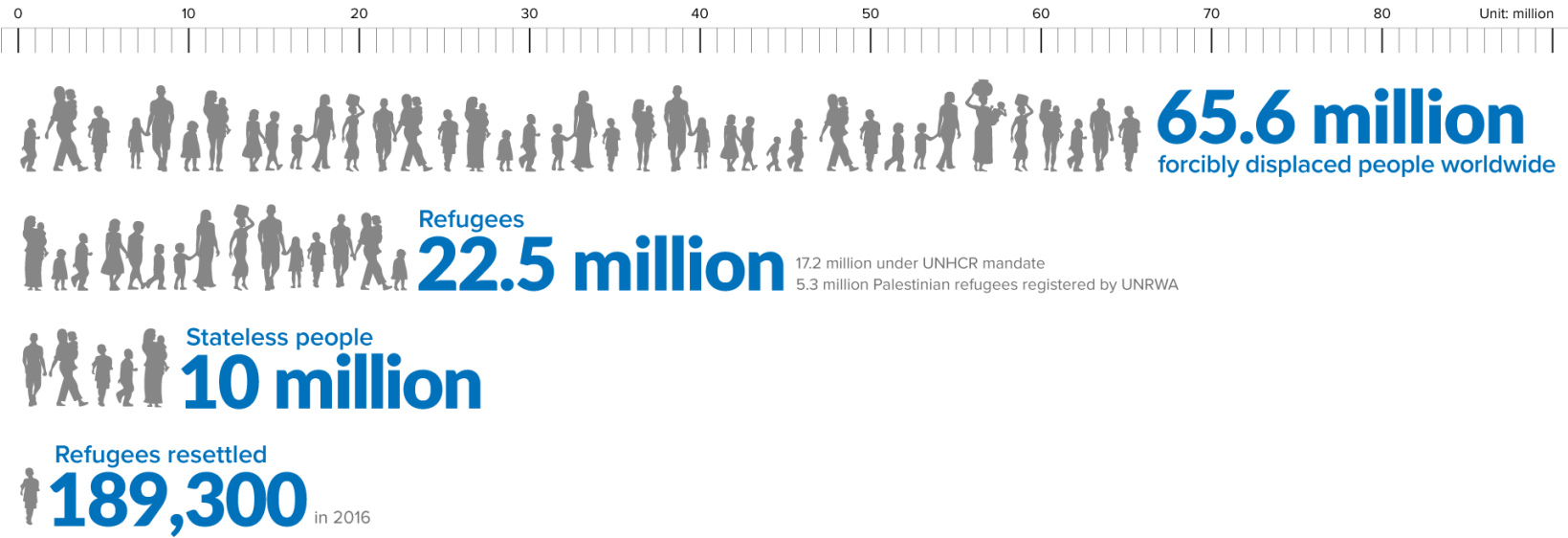


In 2016, on average, **one person every 2.5 minutes** resettled under IOM auspices to a third country.

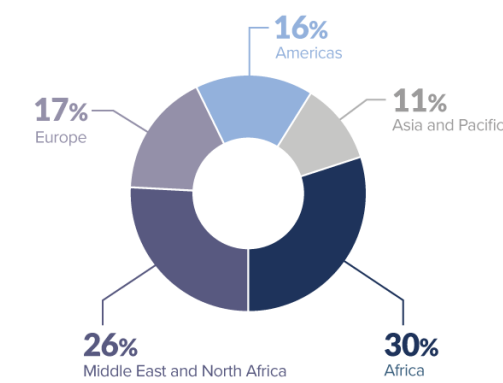
Over the past 6 years the number of persons **resettled** under IOM auspices increased by 150 per cent.



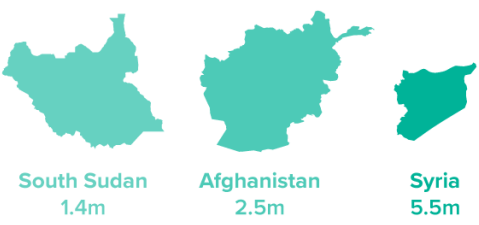
# Current Displacement Landscape



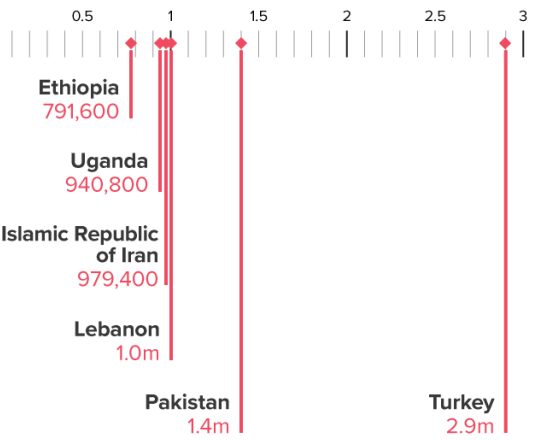
Where the world's displaced people are being hosted



**55%** of refugees worldwide came from three countries



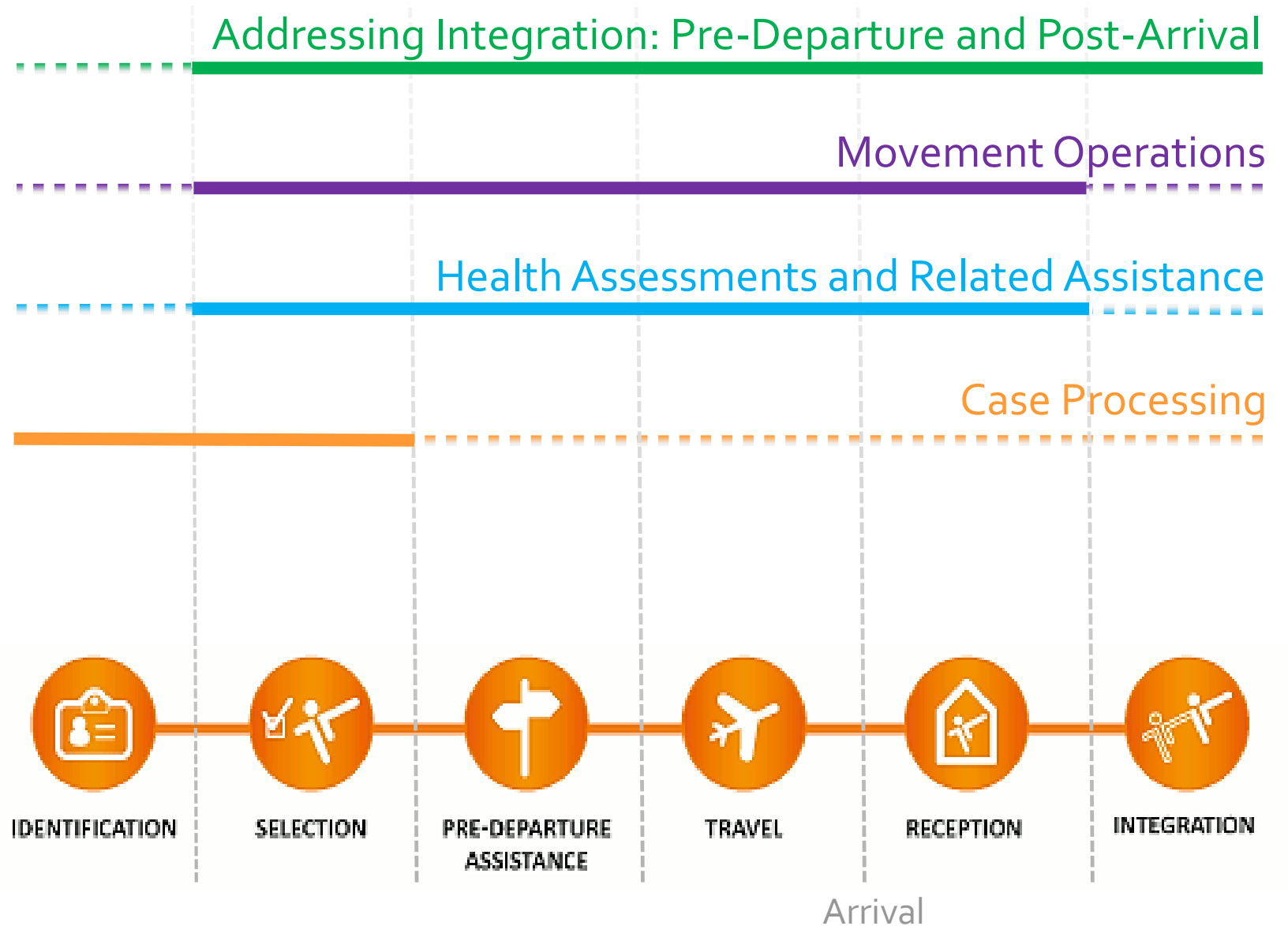
Top hosting countries



# Resettlement as a vital protection tool



# IOM areas of work along the resettlement continuum







► CASE PROCESSING

# Case processing and facilitating selection missions

- Refugee interviews
- Completion of government forms
- Translation and interpretation
- Case file management
- Adherence to standard operating procedures
- Strict confidentiality and data protection standards
- Multi-level quality assurance controls
- Robust anti-fraud measures
- Information campaigns
- Selection mission preparation, logistical support and scheduling





► HEALTH ASSISTANCE

# Health Assessments and Related Assistance

- Physical Examination
- Chest x-ray and interpretation
- Diagnostic tests for Tuberculosis
- Other laboratory examinations
- Immunizations
- Pre-departure medical screenings
- Pre-embarkation checks
- Medical escort during travel
- Treatment/referrals for select conditions and/or stabilization
- Health profiles and health data processing





► ADDRESSING  
INTEGRATION  
PRE-DEPARTURE



# Addressing Integration: Pre-departure and Post-arrival

- Pre-departure orientation (PDO) curricula
- Cross-cultural trainers and Training of Trainers workshops
- Pre-embarkation briefings
- Needs assessments, cultural profiles and focus group sessions
- Capacity building for local authorities and settlement actors
- Information sessions for municipalities including teachers, law enforcement officials, health workers and service providers
- Social intake forms
- Trainings on skills development
- Awareness raising and information campaigns
- Assist migrant organizations in developing volunteer programs





## ► MOVEMENT OPERATIONS

# Movement Operations

- In country and international transportation by land, air or sea
- Obtaining/collecting travel documents
- Refugee transit centers
- Ticket booking/arrangement
- Pre-embarkation flight orientation
- Passenger assistance at departure
- Transit assistance
- Operational escorts during travel
- Reception upon arrival and handover to responsible authorities
- Real-time information sharing, monitoring and reporting



# Practical Considerations for Effective Resettlement



<http://www.fmreview.org/>

- Successful resettlement programmes are **refugee-centric**, have protection as their main driver and emphasize integrity and quality at the core of all activities. This means not only ensuring that refugees move in a safe and dignified manner but also that they are empowered, well-informed and properly prepared for third country resettlement and integration into **welcoming communities**.
- **Health assessments** are increasingly recognized as an important tool for **public health promotion and prevention** in the pre-departure phase of resettlement. Referrals for additional investigations or stabilization treatment prior to departure, special travel arrangements, and the provision of medical escorts are all important components in mitigating risk during travel.
- **Pre-departure orientation** goes far beyond simply sharing information about the receiving country; it **prepares refugees** by helping them to **develop the skills and attitudes** they will need to succeed in their new environment. It also addresses the **psychosocial well-being** of refugees, taking into account the social, anthropological, cultural and psychological aspects of resettlement. It is vital to develop courses that are holistic, address the real concerns of participants, and emphasize cultural adaptation, intergenerational communication, gender, changing family dynamics and other challenges.
- Early on in the planning phase, States should engage with host governments for their support of programme objectives and consult with the appropriate stakeholders to **set realistic time frames** and develop a **predictable and manageable pipeline** for refugee departures/arrivals. Resettlement countries and receiving communities should coordinate closely so that sufficient reception capacity is available.

# Trends and Developments

## Observable Trends

- Diverse and challenging context – shift from large homogenous refugee groups from stable, well-established locations to caseloads from more diverse, remote and sometimes dangerous contexts.
- More refugees are resettled to more States through more humanitarian pathways and with the help of more partners.
- Emerging resettlement countries expanding or establishing programmes.
- Increased operational complexity in carrying out our work – for the above reasons as well as increased focus on security, programme integrity and streamlined procedures.

## Recent Developments

- Operationalizing complementary pathways for refugees and other vulnerable persons
- Refugee empowerment and inclusion: improve conditions in hosting countries including access to work and education, provision of accurate information and health promotion early on, increased involvement in shaping the resettlement process
- Multistakeholder partnerships and engagement with private sector.
- Measuring impact – more data collection, programme monitoring and evaluation.







# Thank You



Sarah Knight, Resettlement Assistant  
**International Organization for Migration (IOM)**  
17 Route des Morillons, CH-1211, Geneva 19, Switzerland  
Tel: +41 22 717 9111 • Fax: +41 22 798 6150  
E-mail: [sknight@iom.int](mailto:sknight@iom.int) • Website: [www.iom.int](http://www.iom.int)

Educational  
Seminar,  
Bratislava 2017